

THE HILL CHURCH

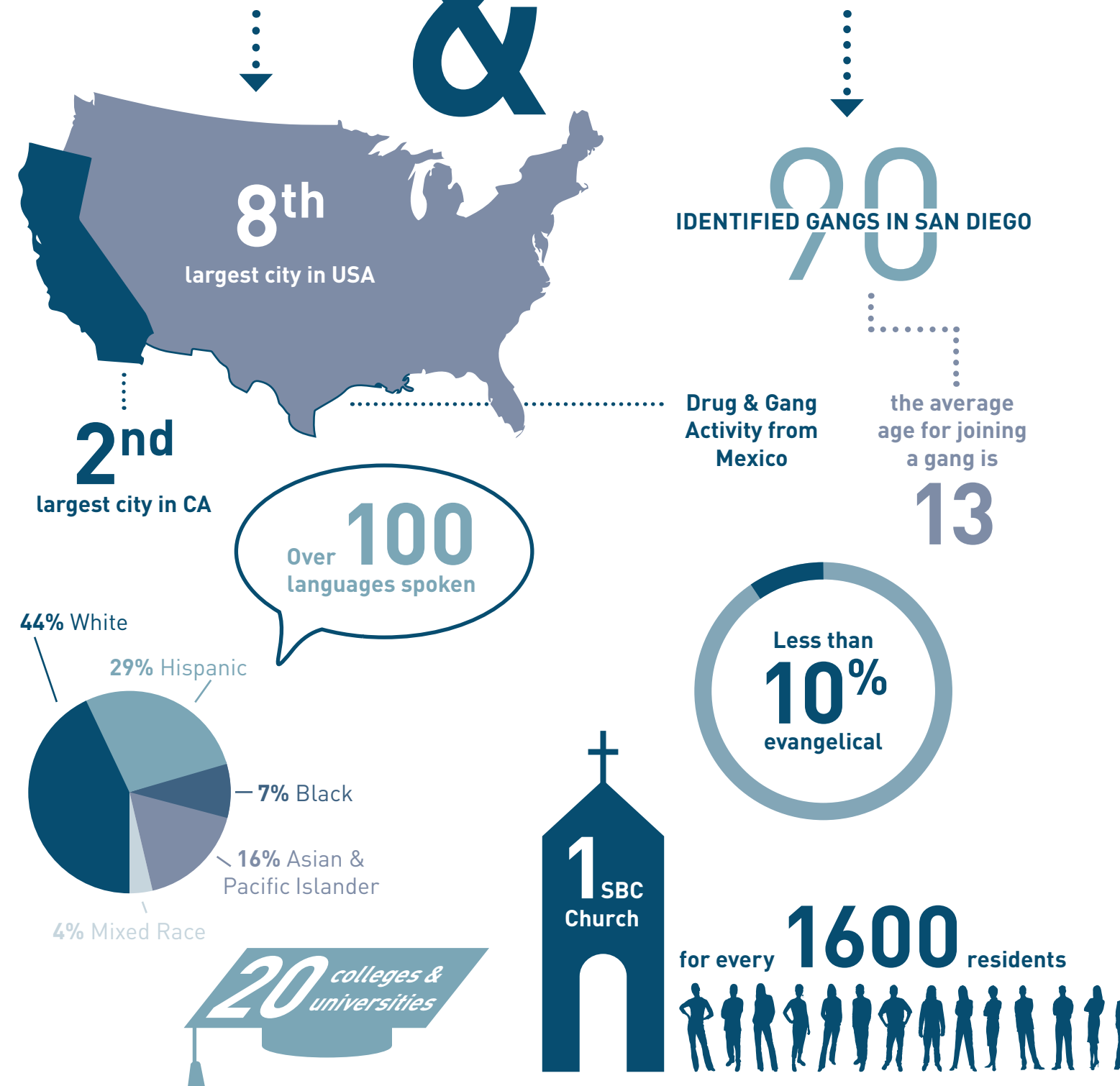


SAN DIEGO, CA | A NEW CHURCH PLANT COMING SUMMER 2017

WHY SAN DIEGO?

San Diego is America's eighth largest city. Located just 20 miles north of the Mexican border, it is a richly diverse city with over 100 different languages spoken. San Diego features near perfect weather, beautiful beaches, rolling mountains, top universities and tourist destinations, legitimizing its claim to be "America's finest city." Because of its beauty, the city is driven by consumerism and a real worship of recreational activities. San Diego is a juxtaposition of wealth, success and glamour alongside extreme homelessness, a strong gang presence, human trafficking and poverty. Embedded underneath all of San Diego's beauty and charm is a lack of healthy, gospel-centered churches and a desperate need for the good news of Jesus Christ.

THE INFLUENCE & THE NEED





WHY LA MESA?

- Population: **60,000**
- 9%** evangelical
- Average age: **37**
- 14%** of residents were born outside of the USA
- 3-5%** consistent growth annually
- 57%** have no religious affiliation

With a desire to plant a church in a diverse, urban, and “less-reached” city in North American, Julie and I visited and prayed through planting our lives in the Northeast. Then a door opened for us to visit California, and right away San Diego grabbed our heart. Truthfully, before visiting, we felt San Diego was not the place for us. We knew our calling was not to an affluent beach community. Yet, we quickly learned San Diego is much more than sun, beaches, and surfboards. Our journey in San Diego began with a local named James Gordon. Instantaneously, we sensed the significance of our time with him. James was able to show us the “real” San Diego. Not the beaches. Not the tourist spots. But San Diego, in all its density and diversity. Furthermore, Julie and I were able to see how God had uniquely gifted us—our

experiences, backgrounds, marriage, and children—for this city. It was eight months later, after my second visit with team members when the Lord made clear our call to San Diego, and specially “the Jewel of the Hill”—La Mesa. La Mesa is a transitional community, in many ways. With a population just over 60,000, La Mesa is able to maintain its distinct hometown feel known as the “Jewel of the Hill.” However, due to accessible public transportation and desirable schools, locals are quick to tell you just how fast the area is changing. Of the 60,000 that call La Mesa home, over 14% were born outside the U.S. And while there is a presence of church buildings in La Mesa, 57% of the residents claim no religious affiliation. San Diego State University is 2.5 miles from downtown La Mesa and is ranked 7th in the nation

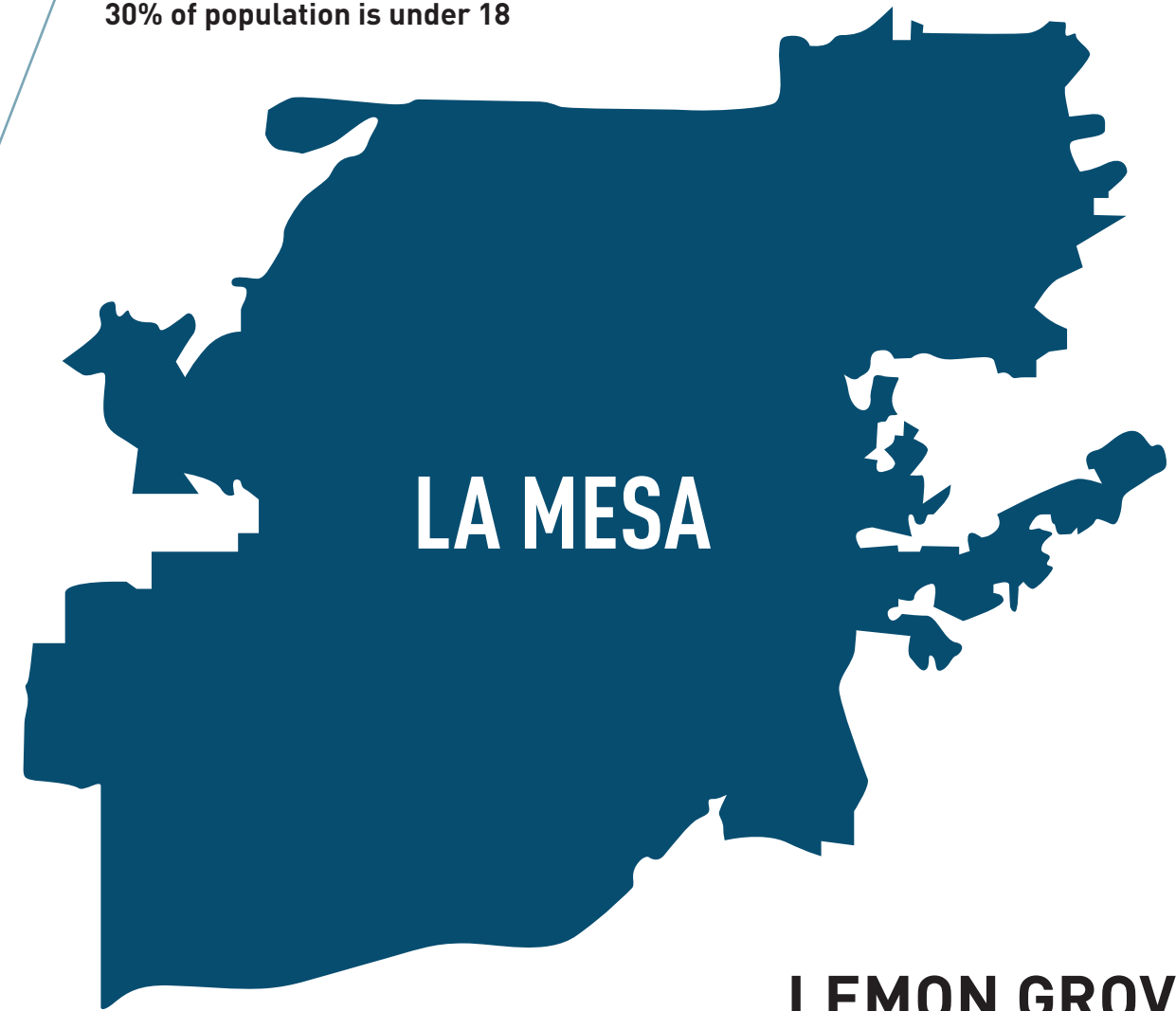
for racial and ethnic diversity with just under 35,000 students. But for us, what makes La Mesa “the Jewel of the Hill” is its central location between its distinct surrounding communities. Within a 6-mile radius, are the communities of City Heights, Lemon Grove, and El Cajon. City Height, to the west, has a population 95,000 people, of which 41% were born outside the US. El Cajon, to the East, has just over 100,000 with 30% immigrant born. In El Cajon alone there are between 30 to 40,000 Iraqis and Syrians. Just south, Lemon Grove is a smaller yet very diverse community of 26,000 people. For these reasons, and many more, we see La Mesa as a perfect location for a gospel-centered church to be birthed!

CITY HEIGHTS

40.7% born outside the US
Zero SBC churches
30% of population is under 18

EL CAJON

101,500 people
30% born outside US
30,000-40,000 Iraqis and Syrians



LA MESA

LEMON GROVE

26,000 people
Very diverse

SOUTH EAST SD

Gangs
Crime
Brokenness



**THE HILL CHURCH
EXISTS TO DECLARE
THE GOSPEL OF JESUS
CHRIST THROUGH OUR
LIVES TOGETHER.**

WE WILL FULFILL OUR MISSION STATEMENT BY EQUIPPING EVERY MEMBER TO LIVE OUT OUR THREE CORE VALUES OF:

GOSPEL

FAMILY

MISSION

Our message is clear and simple. We believe that the hope for San Diego and the nations is the Gospel of Jesus Christ—“the power of God unto salvation to everyone who believes” (Rom. 1:16). Everything we do as church will be built upon this foundational belief of declaring this good news to San Diego and world.

We believe God’s primary means of making His Gospel known in the world is **through the local church** (1 Pet. 2:9-10; Eph. 2:18-22). Furthermore, we believe the primary tasks of the local church is **making disciples** (Matt. 28: 16-20; Eph. 4:11-13; 2 Tim. 2:2).

Therefore, as a church, we will align all that we do towards disciple-making.

We define a disciple as someone who is **committed to family, growing in the gospel, and living on mission for Jesus Christ.**

Planting Churches

Expository Preaching

Equipping Leaders

As a new church plant, rather than imposing an outside model or style, we seek to plant a simple (limited programs), contextually driven church. Discipleship will be at the center of all we do, embedded with the core convictions of:

Gospel-Centered Worship

Kingdom Diversity

Missional Communities

LEADERSHIP:

JIMMY STEELE

Jimmy and Julie were born and raised in Atlanta Georgia. The two of them have actually attended school together since the 3rd grade! After high school they began dating, and shortly thereafter were married. This year they will celebrate 14 years of marriage and three wonderful kids: Payton (14), Nathan (9), and Adlai (4).

Just a few years into their marriage both came to faith in Jesus Christ. It was shortly after on the mission field in the Middle East, they knew their family was being called into ministry. Burdened with a passion for the nations, in 2010 they relocated to North Carolina to attend Southeastern Seminary and answer the call to what they believed to be

overseas missions. However, God had different plans.

During their time at Southeastern, God began stirring a renewed passion for the local church in their marriage. Through an internship at Open Door in Raleigh, their growing desire to plant a church in a dense and diverse city in North American was confirmed by the elders. After an intense season of prayer and seeking the Lord's direction, God melted their hearts for San Diego. The Steele's desire for the Lord to use their family, background, and experiences to see a healthy gospel-centered church planted in the strategic city of San Diego.



MINISTRY EXPERIENCE

Jimmy has served on many short term mission teams around the world. He has served in the area of children's ministry and community group ministry. He completed a two-year church planting internship at Open Door where he currently serves on staff.

Jimmy attained his undergraduate degree from The College at Southeastern and is finishing his M. Div. at Southeastern Baptist Theological Seminary. Julie is a registered nurse, specifically practicing in the area of pediatrics, which is her passion.

TIMELINE

SUMMER/FALL 2017

- Move into target area
- Begin networking with local churches and local partners
- Begin small groups in strategic areas
 - Evangelism/Discipleship
 - Secure location

SUMMER/FALL 2018

- Community outreach events (visiting churches)
- Follow up with outreach attendees
 - Start new small groups
- Begin focus on SDSU campus
 - Begin formal leadership training (discipleship training)

WINTER/SPRING 2017

- Develop prayer team
- Solidify and continue training core team
- Develop discipleship strategy
- Launch website
- Begin fundraising
- Build local strategic partners
- Lead vision tours with partnering churches

WINTER/SPRING 2017-2018

- Begin gathering collectively (groups)
- Launch first worship service
- Establish membership/covenant

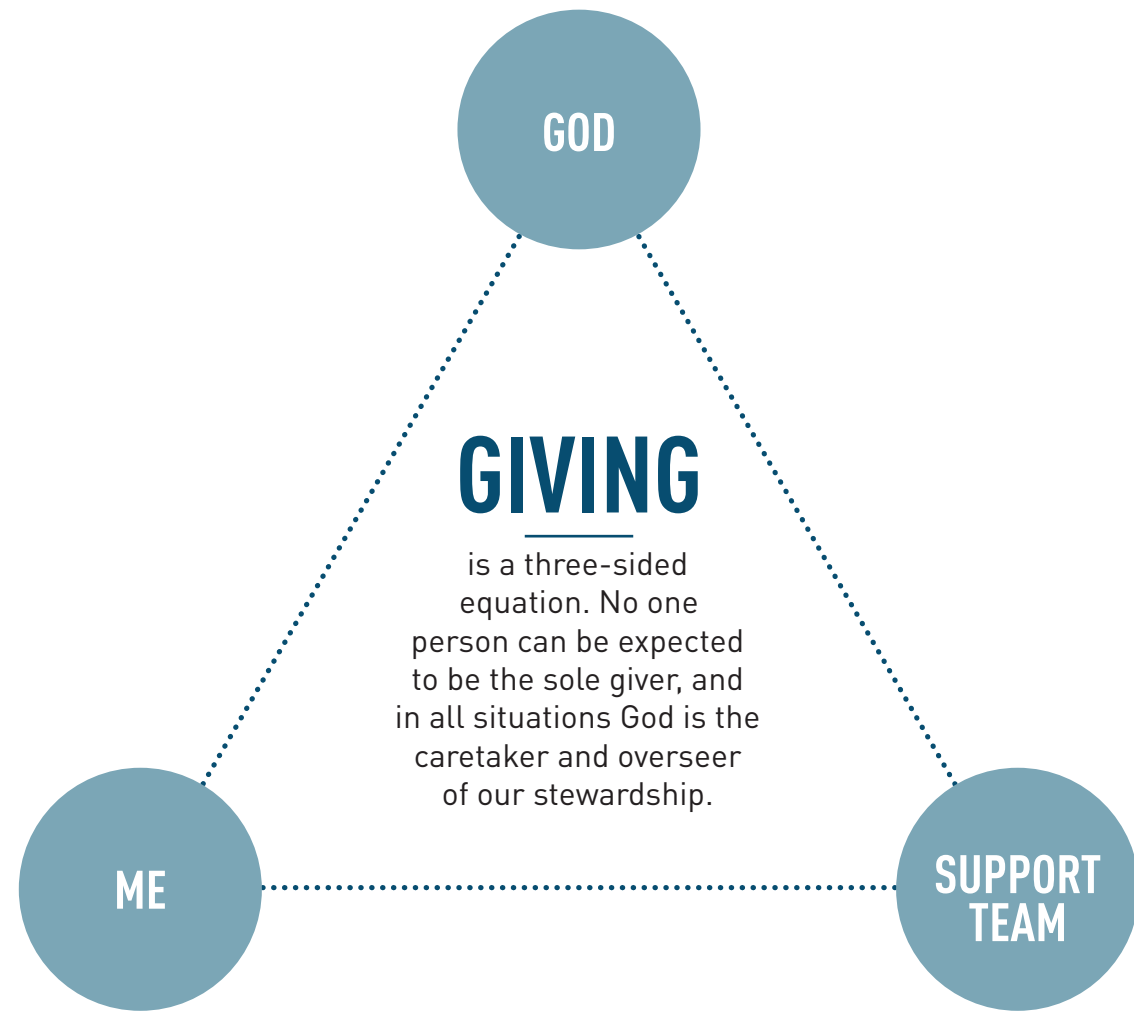
WINTER/SPRING 2019

- Establish age-specific ministries
- Add elders and staff as needed

BUDGET (ONE YEAR)

\$188,500

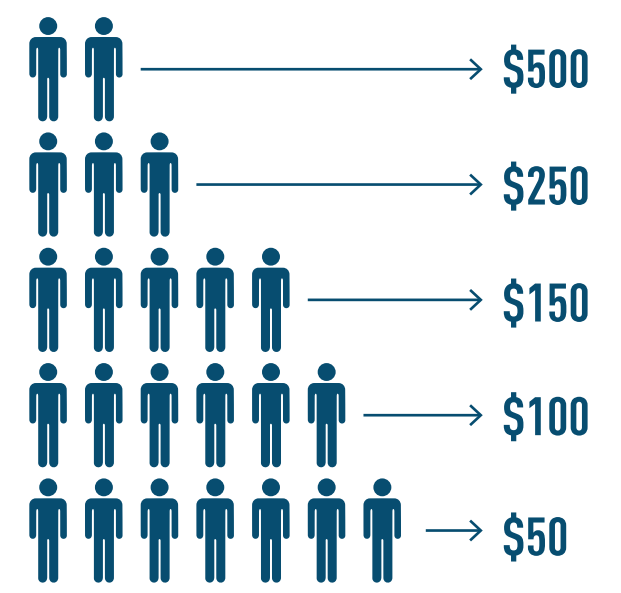
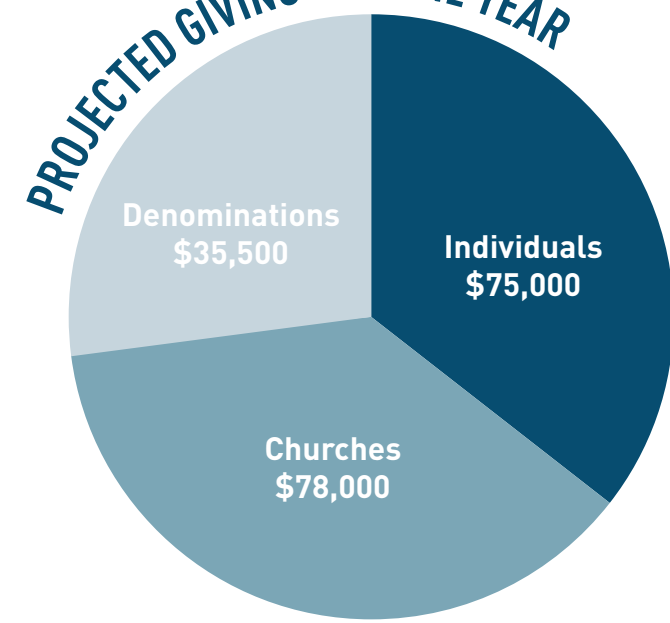
- DISCIPLESHIP | \$5,000
- ADMIN | \$7,000
- OUTREACH | \$12,000
- EQUIP | \$14,500
- FACILITIES | \$25,000
- LEADERSHIP | \$125,000



Second only to San Francisco, San Diego is listed as the “least affordable city” to call home in the U.S. For the Hill Church to succeed in this context, we need your financial support. Our sending churches are committed to us financially for the next several years, but we are still in need of many individuals and churches to partner with us for the Hill Church to become a reality.

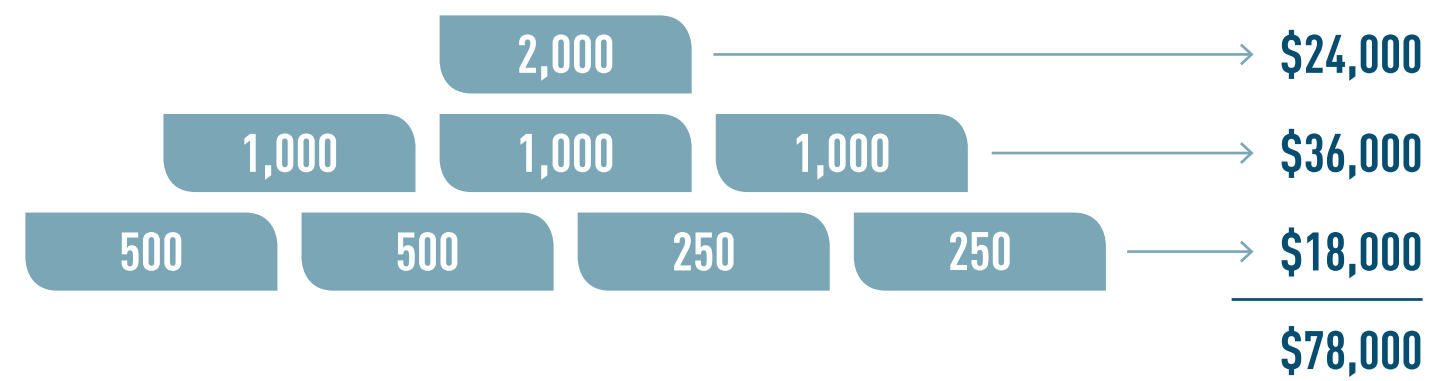
PARTNERING WITH US

PROJECTED GIVING FOR ONE YEAR



INDIVIDUALS MONTHLY GIVING
\$6,250 MONTHLY

CHURCHES MONTHLY GIVING YEARLY TOTAL



ENDORSEMENTS



“The Pillar Network is thrilled to partner with Jimmy Steele as he leads his team toward planting, The Hill Church, in the La Mesa area of San Diego. After watching Jimmy’s life for a number of years his love for Christ, disciple making, and the La Mesa Community it is evident that he is compelled by God to plant a thriving Christ exalting church that reaches these people with the Gospel of Jesus Christ.”

Zach Nelson

Executive Director & Church Planting Mobilizer, Pillar Network



“San Diego desperately needs churches that can bridge the growing cultural and ethnic gaps. The Hill Church under Jimmy Steele’s leadership will be a gospel-centered church that meets this need.”

Dwayne Milioni

Senior Pastor, Open Door Baptist Church

Board of Directors Chairman, Pillar Network



“Like many urban centers in North America, San Diego is a city in desperate need of healthy gospel-centered churches. Jimmy Steele is a young man with a passion for Christ, His Church, and His Word. Under Jimmy’s leadership, I am excited about the Kingdom potential of The Hill Church in San Diego and beyond.”

Tony Merida

Senior Pastor, Imago Dei Church



“I am so grateful for all that God has done in calling Jimmy Steele to ministry and preparing his life for planting a church in San Diego. He and Julie have a wonderful family and sincere commitment to impact the world through the ministry of the local church. I am excited to partner with them and support them as they go on mission to plant this church for the glory of God.”

Tim Dowdy

Senior Pastor, Eagles Landing First Baptist Church



“I’ve had the privilege of getting to know Jimmy and his family over the last several years and walking alongside him as he prepares to plant his life in San Diego with his family. He is a faithful servant, a faithful leader of his family, a faithful shepherd, and a faithful sharer of the gospel. I strongly encourage you to support him in prayer and consider how God might want to invest your time, talents and treasure in the church planting efforts that God has called him to pursue.”

Mike Dodson

Associate Director of NA Missions & Assistant Professor of Church Planting at SEBTS

PARTNERS:



PARTNER WITH US

We are an SBC church plant, partnering with the North American Mission Board and the Pillar Network. We will also be sent out by our two partnering churches—Open Door Baptist in Raleigh, NC and Eagles Landing First Baptist in McDonough, GA. However, for the Hill Church to become a reality, we need as many partners as possible to join us in this exciting adventure.

PRAY

Pray with us! Church planting is a spiritual endeavor. Therefore, we would love for you to join our team in praying for The Hill Church. To keep you informed on how to specifically pray for us over the next several months you can sign up to receive our newsletter at <http://reachsandiego.org/blog/>.

GIVE

Second only to San Francisco, San Diego is listed as the “least affordable” city to live in. For the Hill Church to be successful in this context, we need your financial support! Our sending churches are committed to us financially for the next several years, but we are still in need of many individuals and churches to partner with us for The Hill Church to become a reality. To learn more about how you can partner with us, email Jimmy at jjsteele007@gmail.com or phone at 678-758-3996.

GO

One of the most obvious ways you could partner with us, is by becoming one of us! If you or anyone you know is interested in learning more about joining our church planting team, email Jimmy at jjsteele007@gmail.com or phone at 678-758-3996.

Please partner with us in planting a gospel-centered church in San Diego

GIVING BY CHECK?

All gifts are tax-deductible. Checks and gifts should be made out to The Pillar Network, and mailed to:

The Pillar Network
9801 Durant Road
Raleigh, NC 27614

*Please designate the gift to “The Hill Church San Diego” on the memo line of the check or on a separate note.

GIVING ONLINE?

Go to reachsandiego.org or thepillarnetwork.com. Click “Give” (top right). Scroll down to please click to here to give now. Existing users can log in and new users can create a login. To give one time, select “Quick Give.”

*Designate all donations to The Hill Church San Diego.



